



T U i i S F i

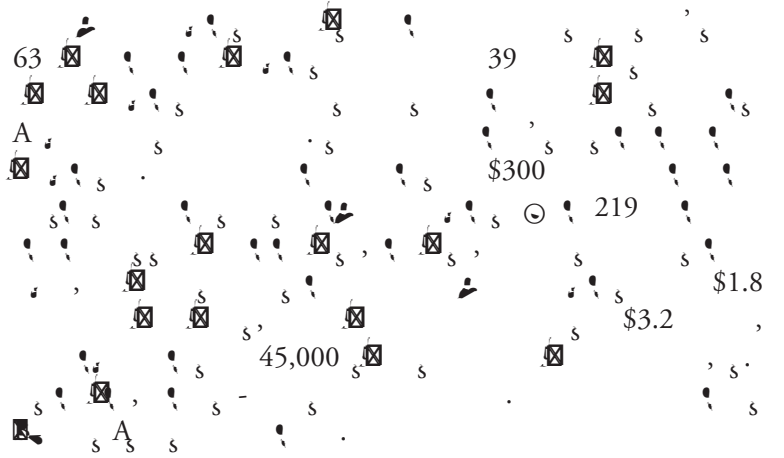
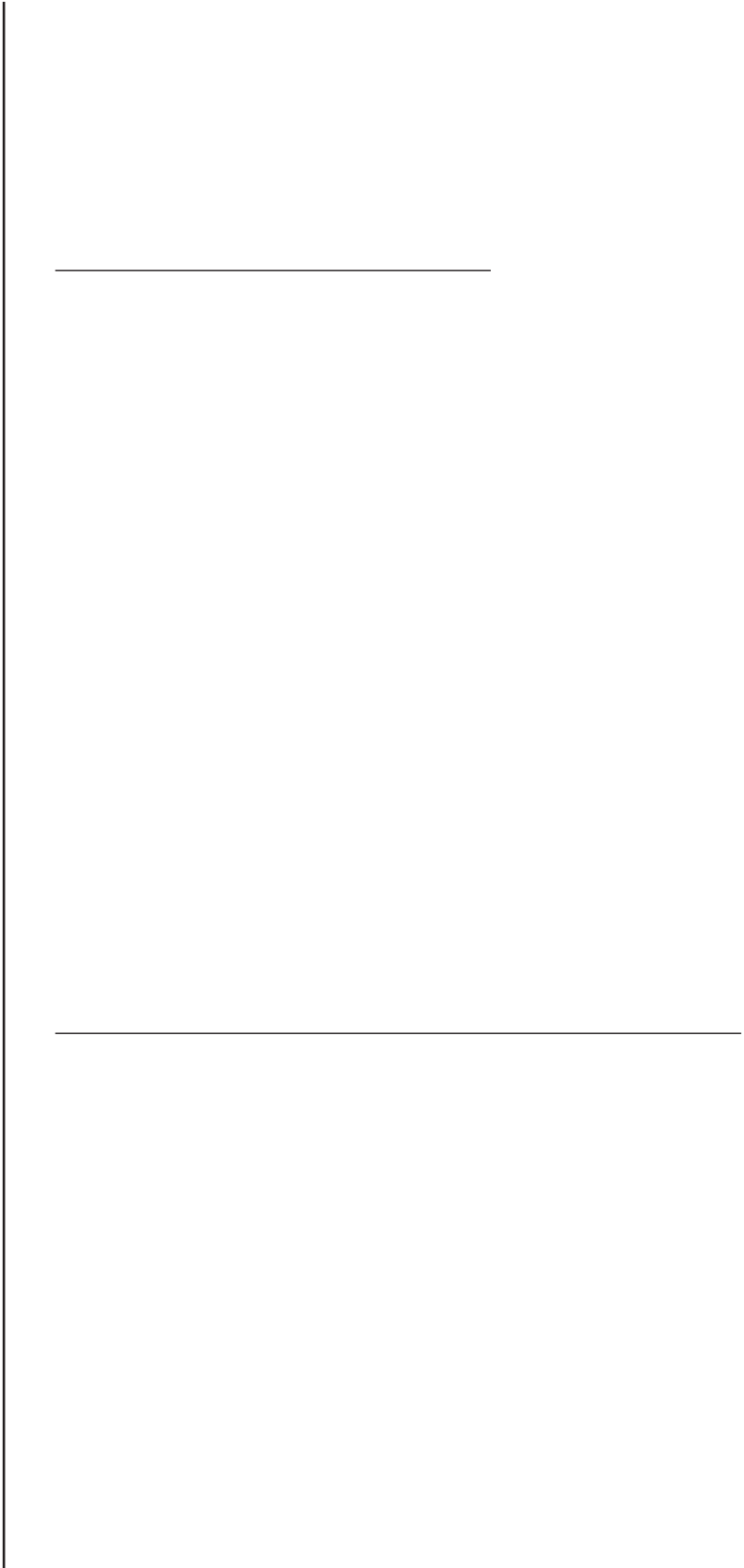


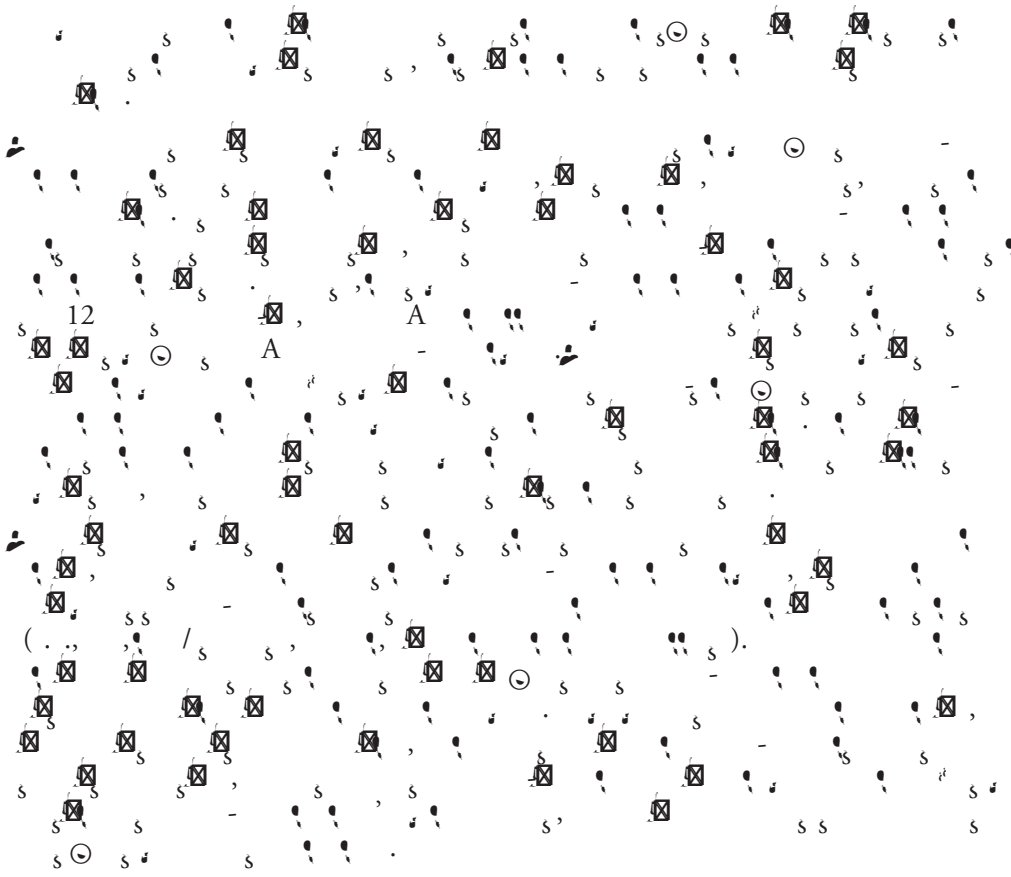
Table of Contents

| | |
|------------|---|
| E i S mm | 3 |
| I i | 5 |
| P E i | 5 |
| P E i Fi i | 6 |
| . A A s s | |

List of Tables

1. ; ☒ ; ☒ ; s ; s -
 ; ; s20

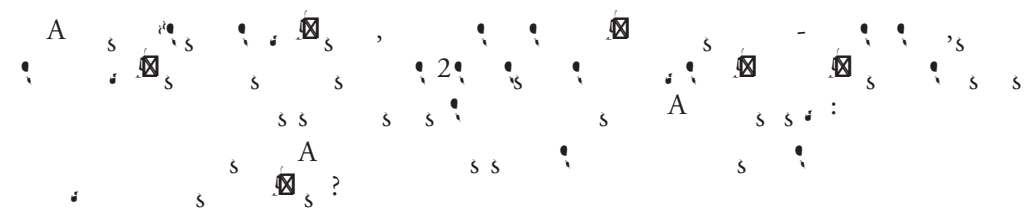




Introduction

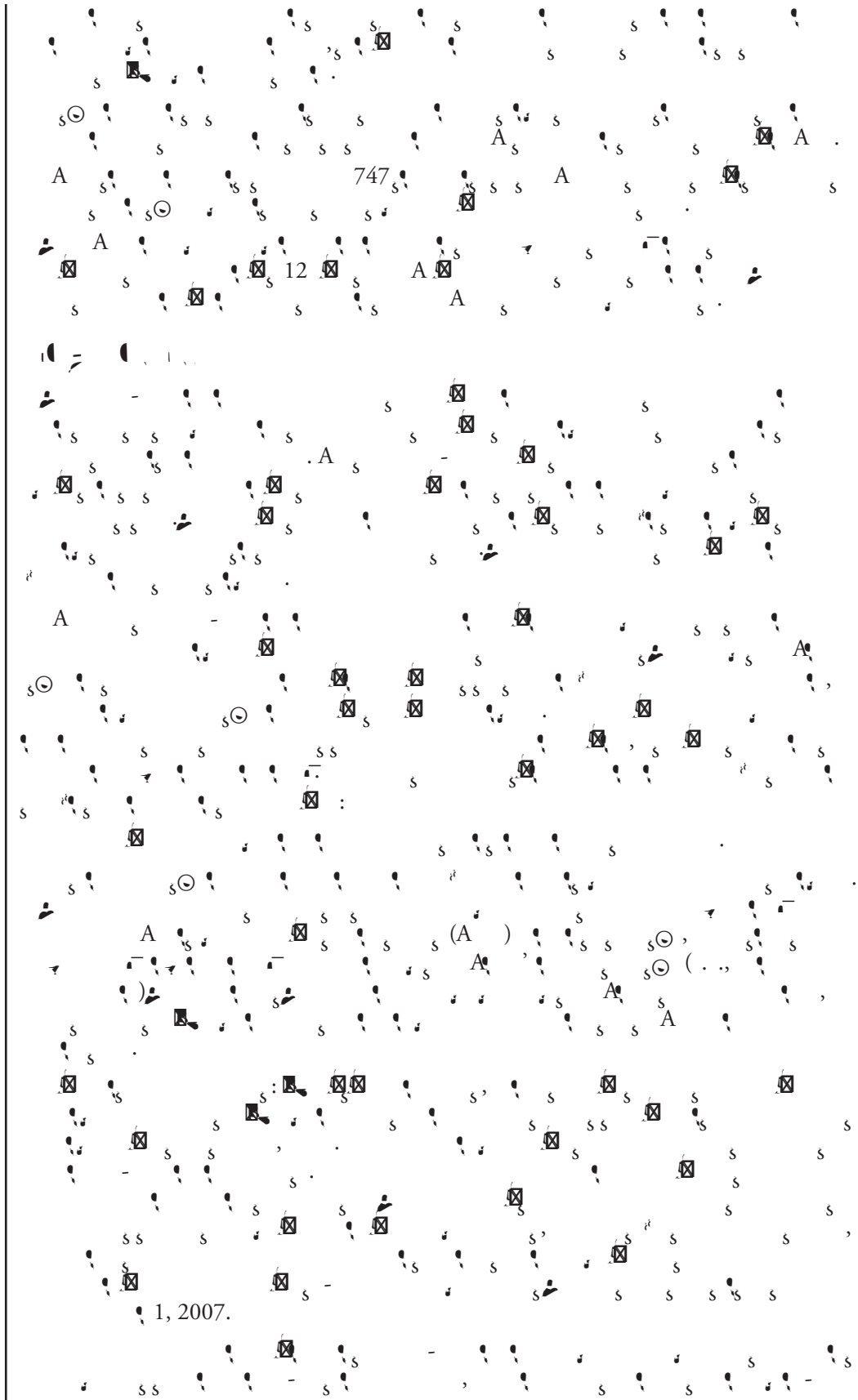


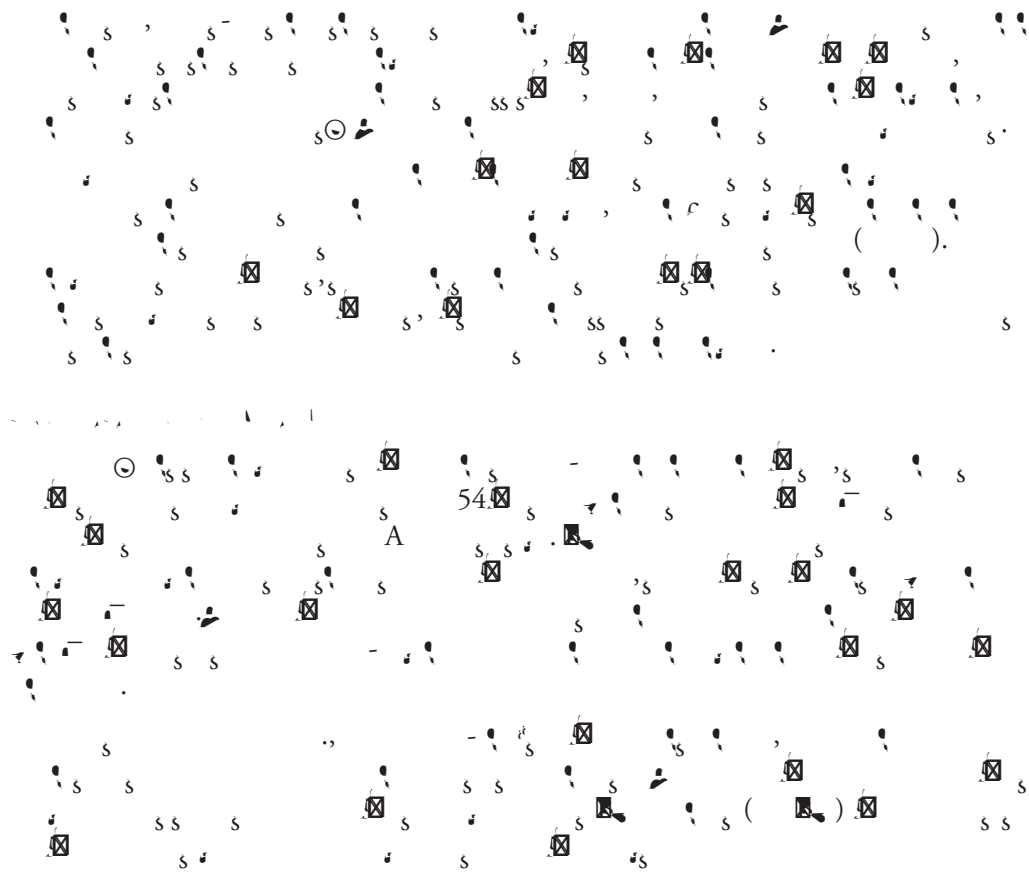
Process Evaluation

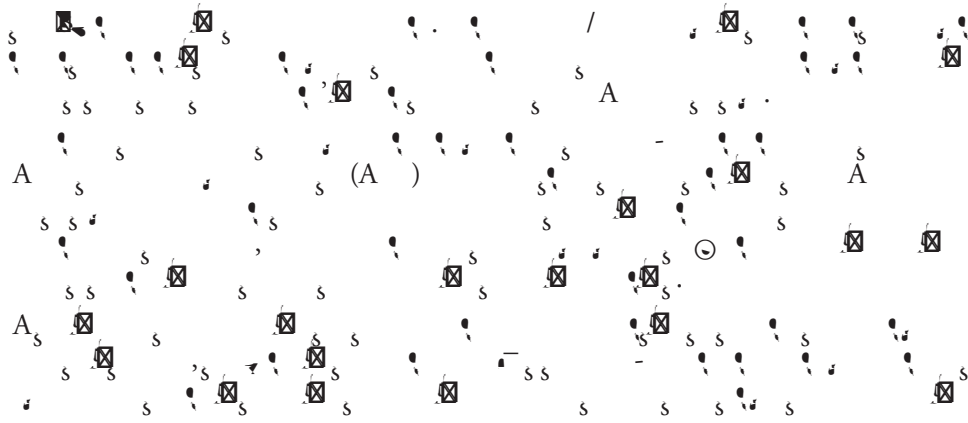


A, 60-80, 7-15, 1, 2006, 30, 2007, 2,076, 965
 (46%), 1,111, (54%).
 44%, 3:00, 11:00, 4.8, 72%, 28%, 464, (47%), 3

Phase II









s - it s ; s . s ; s . s , it ;

(67%) - , 4% 37% 9%

(. ., A.A., A., . ., s .).

1-12, s

13

12, 71%

16%

13

44%

22%

12%

10%

1, 13%

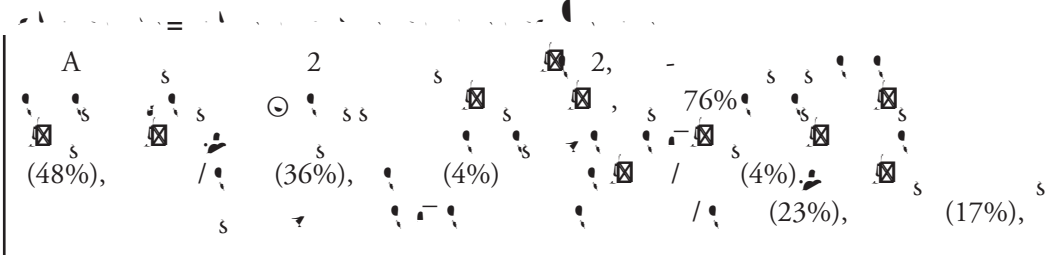
A s.

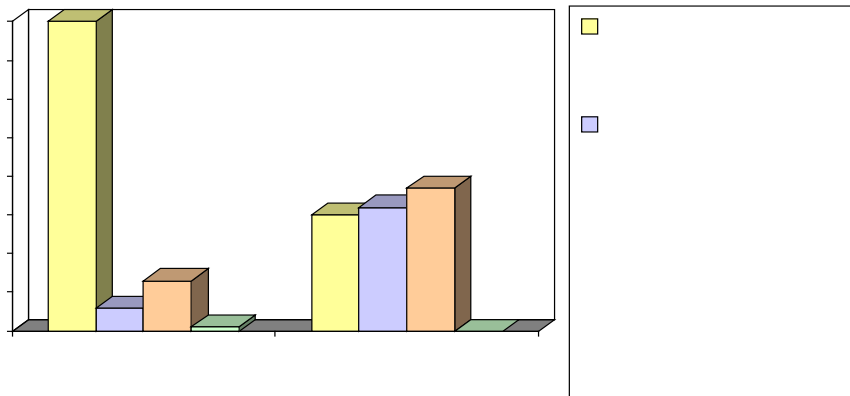
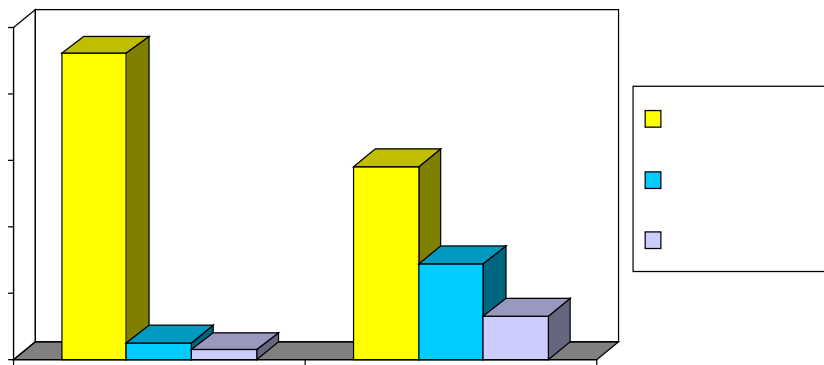
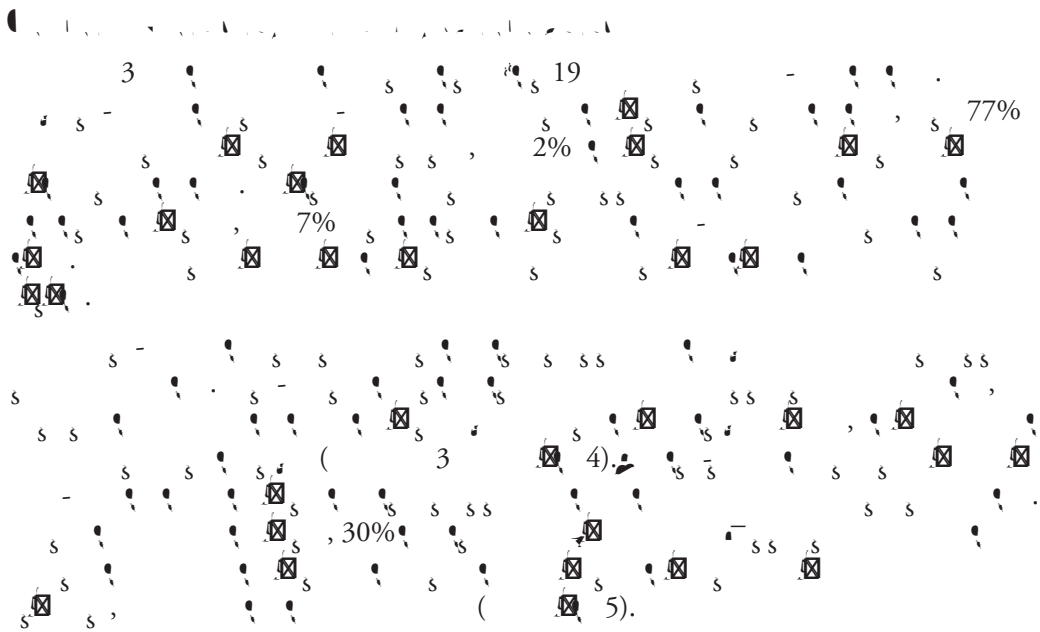
92%

90%

8%

1. A





| | | |
|---------|-----|------|
| | | |
| | 80% | =248 |
| | 13% | =41 |
| | 6% | =20 |
| | 1% | =3 |
| (314) | | |
| | 13% | =32 |
| | | |
| | | |
| | | |
| | | |
| | | |
| | | |

| | | |
|--|--|--|
| | | |
| | | |
| | | |
| | | |

Table 4. Sobriety, Vocational Activities and Housing Status during Follow-up among Successful Graduates

| Sobriety | | |
|-----------------------|-----|------------|
| 3 months | 56% | =95 (169) |
| 6 months | 53% | =63 (120) |
| 12 months | 44% | =30 (69) |
| Vocational Activities | | |
| 3 months | 62% | =63 (102) |
| 6 months | 59% | =47 (80) |
| 12 months | 52% | =11 (21) |
| Housing Status | | |
| 3 months | 61% | =63 (103) |
| 6 months | 56% | =45 (80) |
| 12 months | 52% | =11 (21) |

Table 7. ARF Referrals - Substance Abuse Reported at VIP-ER Admission⁸

| | | |
|-----|-----|-----|
| A | 80% | =24 |
| / | 8% | =2 |
| / | 3% | =1 |
| | 3% | =1 |
| | 3% | =1 |
| | 3% | =1 |
| | | |
| | 44% | =13 |
| | 20% | =6 |
| | 14% | =4 |
| | 10% | =3 |
| A | 3% | =1 |
| | 3% | =1 |
| | 3% | =1 |
| | 3% | =1 |
| | | |
| | 47% | =14 |
| | 37% | =11 |
| 1 3 | 3% | =1 |
| 1 2 | 13% | =4 |

⁸Analyses are based on ARF referrals from classes 13-21.

Table 8. ARF Referrals - VIP-ER Program Discharge Status⁹

| | | |
|--|------|-----|
| | 75% | =18 |
| | 8% | =2 |
| | 17% | =4 |
| | 9% | =2 |
| | 48% | =10 |
| | 20% | =4 |
| | 9% | =2 |
| | 14% | =3 |
| | 59% | =14 |
| | 25% | =6 |
| | 16% | =4 |
| | 100% | =18 |
| | 51% | =3 |
| | 33% | =2 |
| | 16% | =1 |

Table 9. ARF Referrals, Sobriety, Vocational Activities, and Housing at Follow-up for Program Graduates¹⁰

| ARF Referrals | | |
|-----------------------|---|-----|
| 3 | 1 | 39% |
| Sobriety | | |
| 3 | 2 | 50% |
| Vocational Activities | | |
| 3 | 2 | 50% |

¹⁰Analyses are based on ARF referrals from classes 13-21.