

**Fathi Amsaad**, Visiting Instructor (MS, University of Toledo), cyber-physical systems.

**Dave Armitage**, Associate Professor (PhD, University of Rhode Island), asynchronous logics and systems.

**Sriram Chellapan**, Associate Professor (PhD, Ohio State University), socio-technical systems.

**Ken Christensen**, Professor and Interim Chair (PhD, North Carolina State University),

**Alessio Gaspar**, Associate Professor (PhD, Université de Nice-Sophia Antipolis), evolutionary algorithms and computing education research.

**Dmitry Goldgof**, Professor and Interim Associate Chair (PhD, University of Illinois at Urbana-Champaign), medical image analysis and computer vision.

**Lawrence Hall**, Distinguished University Professor (PhD, Florida State University), intelligent systems and data mining.

**William Hendrix III**, Instructor I (PhD, North Carolina State University), graph algorithms and parallel computing.

**Isabela Hidalgo**, Instructor I (PhD, University of South Florida), human-computer interaction.

**Adriana Iamnitchi**, Associate Professor (PhD, University of Chicago), distributed systems and computational sociology.

**Henrick Jeanty**, Professor (PhD, University of South Florida), algorithms.

**Rangachar Kasturi**, Douglas W. Hood Professor (PhD, Texas Tech University), computer vision and pattern recognition.

**Srinivas Katkooari**, Associate Professor (PhD, University of Cincinnati), low power VLSI synthesis.

**Valentina Korzhova**, Instructor I (PhD, University of South Florida), computer vision.

**Miguel Labrador**, Professor and Graduate Program Director (PhD, University of South Florida),

**Jay Ligatti**, Associate Professor (PhD, Princeton University), software security and programming languages.

**Yao Liu**, Associate Professor (PhD, Princeton University), security.

**Xinming Ou**, Associate Professor (PhD, Princeton University), cyber security and cyber physical systems.

**Rafael Perez**, Associate Professor (PhD, University of South Florida),

**Les Piegl**, Professor (PhD, Eotvos University), geometric modeling and computer graphics.

**Paul Rosen**, Assistant Professor (PhD, Purdue University), data visualization and computer graphics.

**Sudeep Sarkar**, Professor and Associate Vice President for Research, University of South Florida.

### Department Advisory Board

**David Allen**, Director of Engineering, Raymond James Financial.

**Kevin Bowyer**, Professor and Chair, Notre Dame University.

**Alan Brannan**, Director of Engineering, CAE.

**Nancy Crews**, Owner, Custom Manufacturing and Engineering.

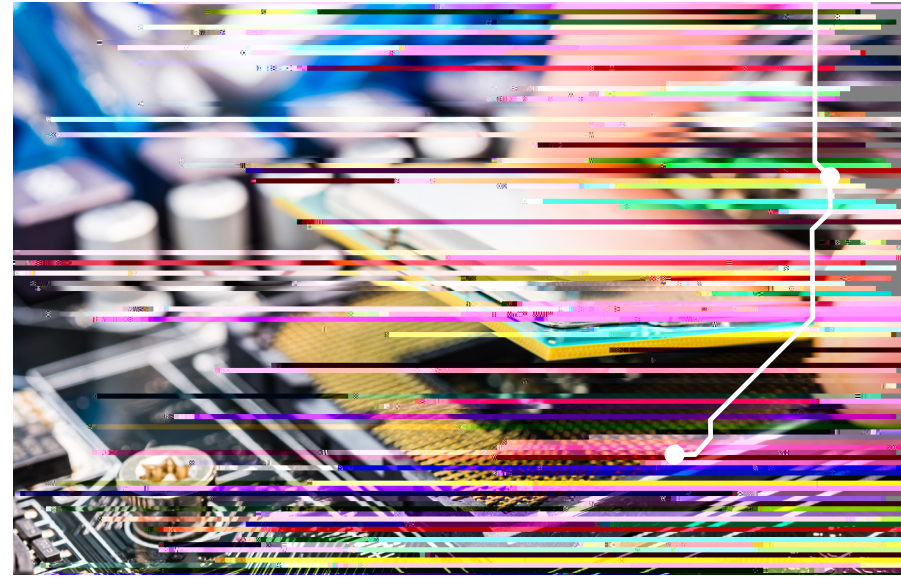
**Chad Hage**, Director of Global Engineering, Nielsen.

**Jeremy L. Rasmussen**, Cybersecurity Director, Abacode.

**Maha Sallam**, President, VuEssence.

**John R. Samson**, Principal Engineering Fellow, Honeywell.

**Mark Volpe**, Engineering Manager, Raytheon.



The Department of Computer Science and Engineering in the College of Engineering at USF is a nationally top-ranked department with outstanding

## Degrees Awarded

## Enrollment



The Bachelor of Science degree program in Computer Engineering is accredited by the Engineering Accreditation Commission of ABET



The Bachelor of Science degree program in Computer Science is accredited by the Computing Accreditation Commission of ABET

[www.abet.org](http://www.abet.org)